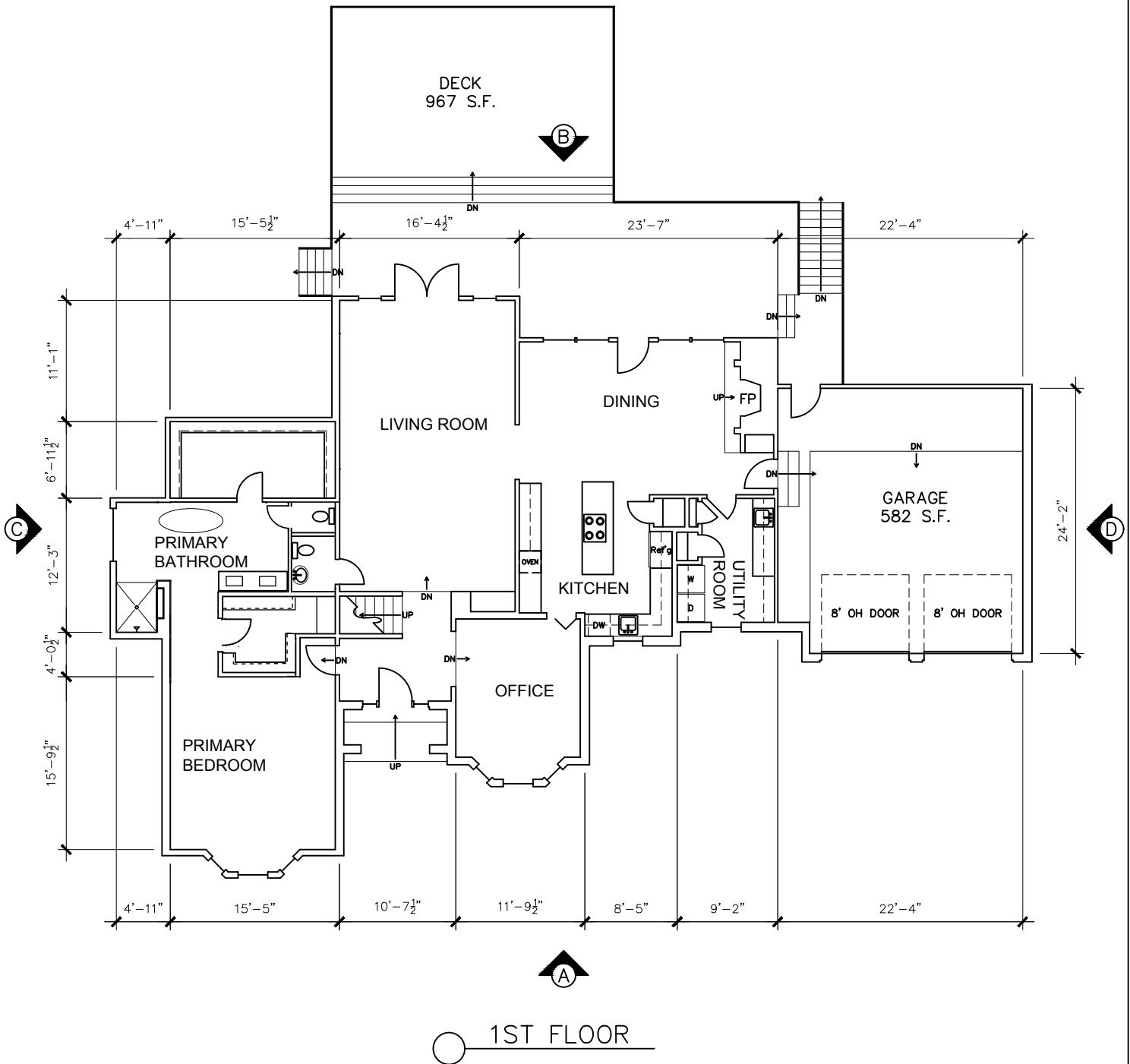


NOTE:

1. DIMENSIONS ARE TO SHOW ROOM SIZES. SQUARE FOOTAGE CALCULATIONS ARE DONE TO ANSI STANDARDS.
2. TOTAL LIVEABLE AREA DOES NOT INCLUDE DECK OR GARAGE SQUARE FOOTAGE.



NOT TO SCALE

Drawing for:
Curated.
1504 Robinhood Trail
Ste. A
Austin, TX 78703

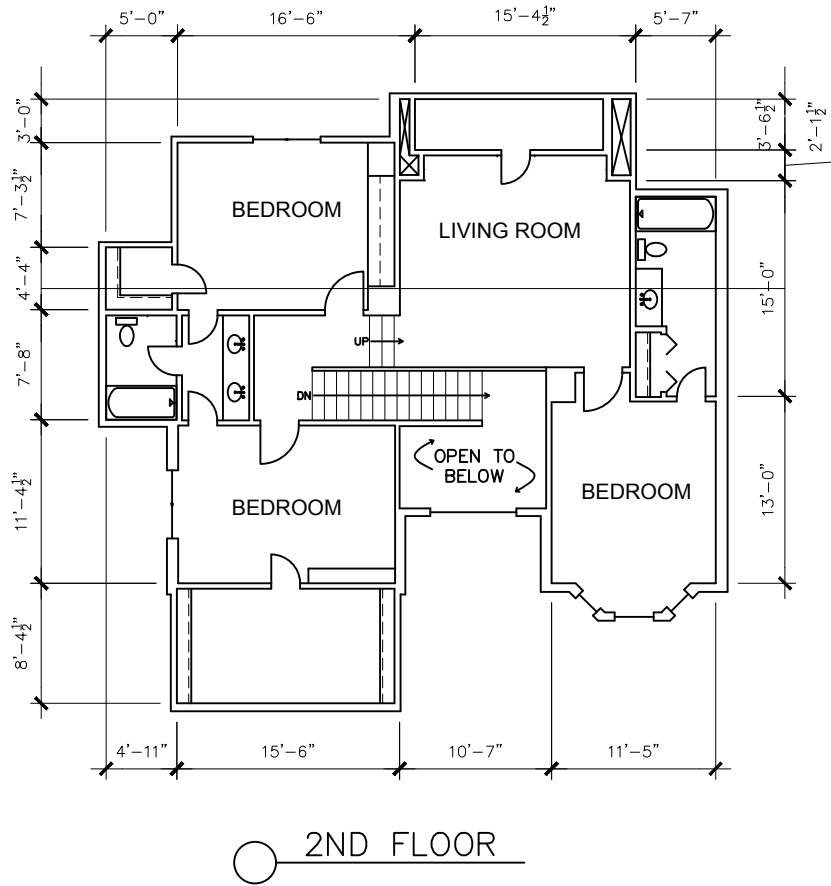
3203 RIVA RIDGE RD.
AUSTIN, TEXAS
TOTAL LIVEABLE AREA: 3,457 S.F.

THE MEASUREMENTS AND FLOOR
PLANS ARE ACCURATE USING THE
AMERICAN NATIONAL STANDARDS FOR
SINGLE-FAMILY RESIDENTIAL BUILDINGS.
ANSI Z765-2013
Project No.: 19118.02
Date: December 30, 2019
©2019

DIMENSIONS
FLOOR PLANS
Austin, Texas
dimensionsfloorplans.com
Phone: (512)342-0114

NOTE:

- 1. DIMENSIONS ARE TO SHOW ROOM SIZES. SQUARE FOOTAGE CALCULATIONS ARE DONE TO ANSI STANDARDS.
- 2. TOTAL LIVEABLE AREA DOES NOT INCLUDE DECK OR GARAGE SQUARE FOOTAGE.



NOT TO SCALE

Drawing for:
 Curated.
 1504 Robinhood Trail
 Ste. A
 Austin, TX 78703

3203 RIVA RIDGE RD.
 AUSTIN, TEXAS
 TOTAL LIVEABLE AREA: 3,457 S.F.

THE MEASUREMENTS AND FLOOR PLANS ARE ACCURATE USING THE AMERICAN NATIONAL STANDARDS FOR SINGLE-FAMILY RESIDENTIAL BUILDINGS. ANSI Z765-2013
 Project No.: 19118.02
 Date: December 30, 2019
 ©2019

DIMENSIONS
 FLOOR PLANS
 Austin, Texas
 dimensionsfloorplans.com
 Phone: (512)342-0114